



Philips GreenPerform Waterproof G3: A high-performance, energy-efficient waterproof batten

GreenPerform Waterproof G3

GreenPerform Waterproof G3 is a superb choice for hard-working applications. Not only does it provide excellent optical performance, it also delivers substantial energy saving. And because it works seamlessly with IoT software like Interact, it also offers the option of customization, convenience, and data-driven insights.

Benefits

- Suit your applications with choice of two superior optics
- Excellent energy savings
- Data-driven insights via
- Interact software and platforms

Features

- Injection molding Polycarbonate Cover Opal (PCO) and Wide Beam (WB) optics
- Up to 140lm/W
- IP65/IK08
- 50,000 hours L70 B50 @ 35°C
- Works with Interact IoT software and platform

GreenPerform Waterproof G3

Application

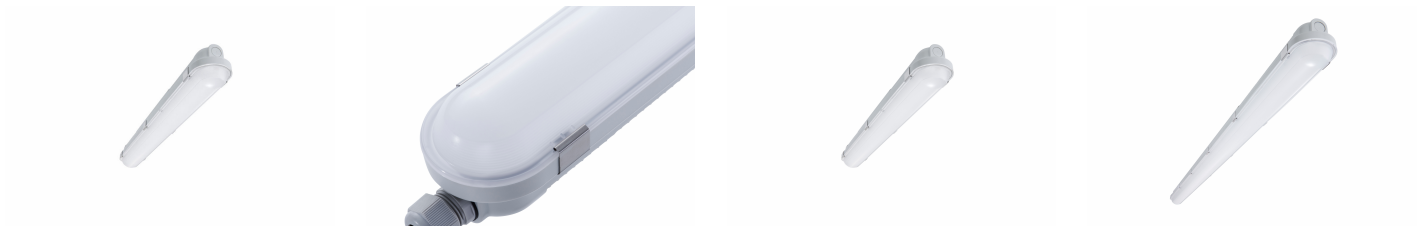
- Parking Garages
- Manufacturing
- Warehouses

Specifications

| | |
|--|--|
| Mounting type | Surface |
| | Suspended |
| Operating Temperature range | -20 to +45°C |
| Light Source | LED |
| Mains Voltage | 220-240V / 50-60Hz |
| Dimming | PSD: DALI WIA: Wireless control, compatible with Interact Pro |
| Control system input | DALI/Wireless Zigbee |
| Material | PC |
| Main color of the luminaire | RAL7035 |
| Lumen maintenance at median useful life 50.000h | L85 |
| Flicker / Pst / SVM | <lt/>4% / 0.5 / 0.4 |
| Luminous flux | Up to 8000lm |
| Power consumption | 7.8W to 60W |
| Luminaire efficacy | Up to 140lm/W |

| | |
|---|---------------------------|
| Correlated color temperature - CCT | 4000K 6500K |
| Color Rendering index - CRI | 80 |
| Optical cover/lens material | PC |
| Optical cover/lens finish | Opal Clear |
| Mechanical impact protection | IK08 |
| Ingress protection | IP65 |
| Driver replaceable | Yes |
| Overall height | 76mm |
| Overall length | 665mm 1215mm 1515mm |
| Overall width | 80mm |
| Installation | Suspension Surface |

Versions



GreenPerform Waterproof G3

GreenPerform Waterproof EcoSet

L600

L1500

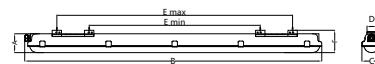
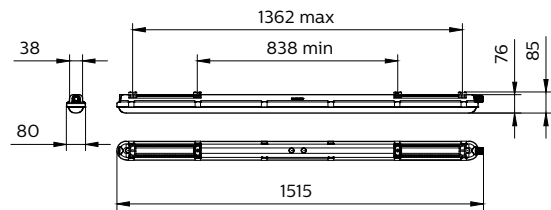
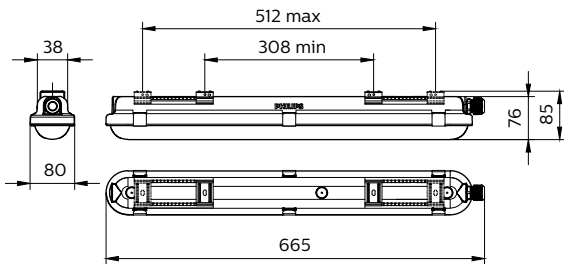
GreenPerform Waterproof G3

Versions

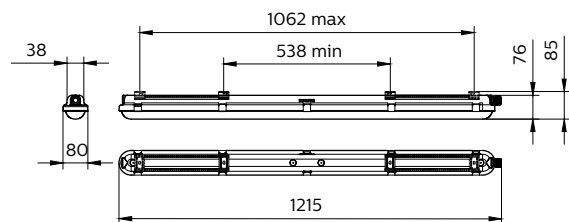
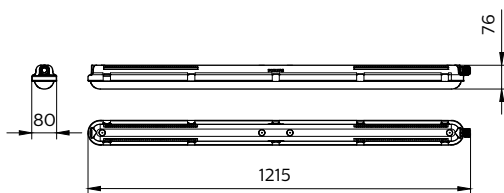


L1200

Dimensional drawing

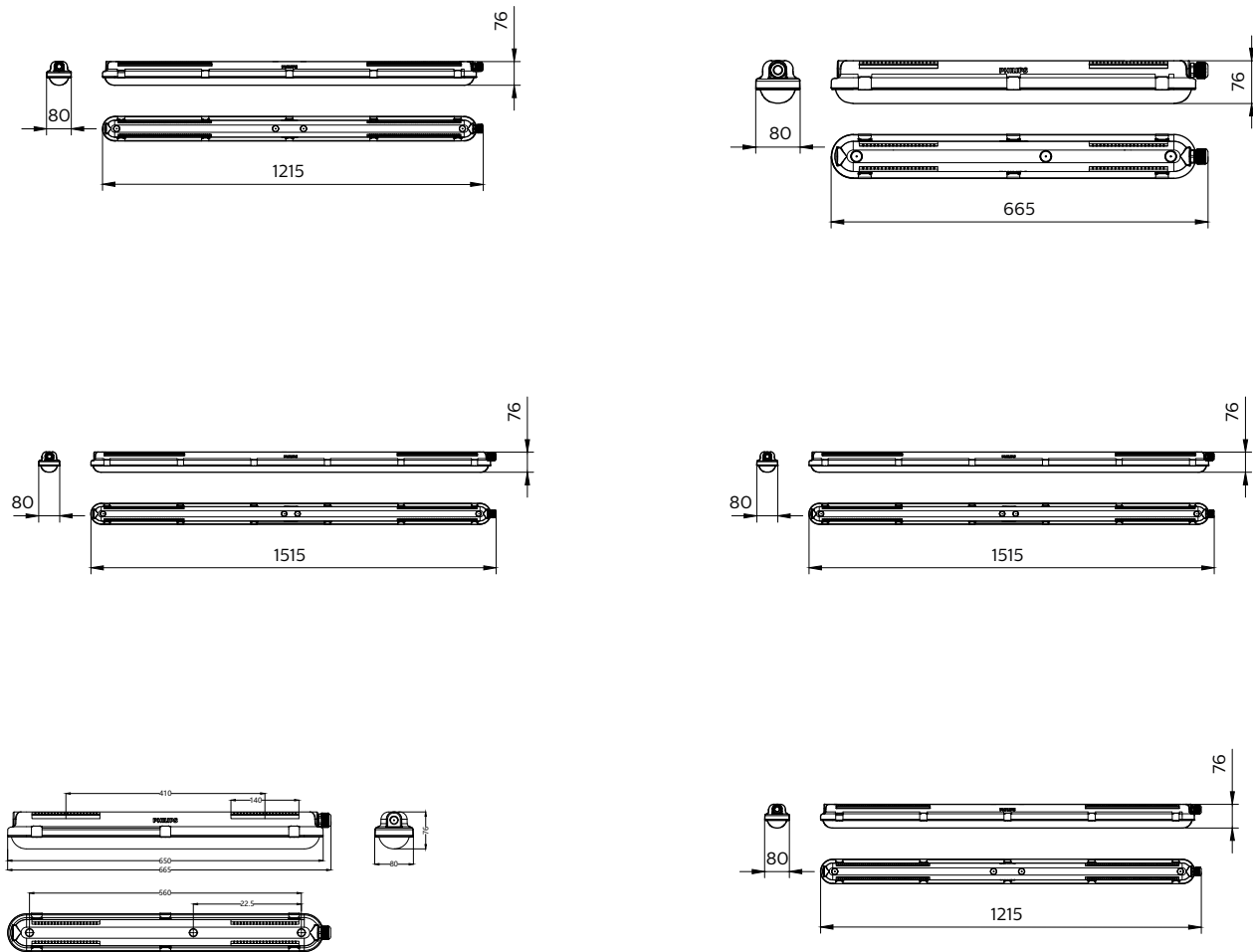


| Type | Dimension (mm) | | | | | | Nr. Of Clips |
|-------|----------------|------|----|----|-------|------|--------------|
| | A | B | C | D | E max | F | |
| L600 | 76 | 665 | | | 308 | 512 | 6 |
| L1200 | 76 | 1215 | 80 | 38 | 538 | 1062 | 10 |
| L1500 | 76 | 1515 | | | 838 | 1362 | 12 |



GreenPerform Waterproof G3

Dimensional drawing



GreenPerform Waterproof G3

General Information

CE mark CE mark

ENEC mark -

Light Technical

Optic type -

Temperature

Ambient temperature range -20 to +45 °C

Mechanical and Housing

Housing Color Gray

Approval and Application

Protection class IEC Safety class I

Mech. impact protection code IK08

Ingress protection code IP65

General Information (1/2)

| Order Code | Full Product Name | Driver included | Flammability mark | Gear | Glow-wire test |
|--------------|----------------------------------|-----------------|-------------------|------|-----------------------------------|
| 911401514342 | WT198C LED10S/840 PSU L600 | Yes | - | - | - |
| 911401514442 | WT198C LED10S/840 PSU PCO L600 | Yes | - | - | - |
| 911401551502 | WT198X LED20S/840 L1 W L600 | Yes | - | EB | Temperature 650 °C, duration 30 s |
| 911401551602 | WT198X LED27S/840 L1 W L1200 | Yes | - | EB | Temperature 650 °C, duration 30 s |
| 911401551702 | WT198X LED40S/840 L1 W L1200 | Yes | - | EB | Temperature 650 °C, duration 30 s |
| 911401551802 | WT198X LED60S/840 L1 W L1500 | Yes | - | EB | Temperature 650 °C, duration 30 s |
| 911401551902 | WT198X LED82S/840 L1 W L1500 | Yes | - | EB | Temperature 650 °C, duration 30 s |
| 911401552002 | WT198X LED20S/865 L1 W L600 | Yes | - | EB | Temperature 650 °C, duration 30 s |
| 911401552102 | WT198X LED27S/865 L1 W L1200 | Yes | - | EB | Temperature 650 °C, duration 30 s |
| 911401552202 | WT198X LED40S/865 L1 W L1200 | Yes | - | EB | Temperature 650 °C, duration 30 s |
| 911401552302 | WT198X LED60S/865 L1 W L1500 | Yes | - | EB | Temperature 650 °C, duration 30 s |
| 911401552402 | WT198X LED82S/865 L1 W L1500 | Yes | - | EB | Temperature 650 °C, duration 30 s |
| 911401571091 | WT198X LED20S/840 L1 S L600 | Yes | - | EB | Temperature 650 °C, duration 30 s |
| 911401571391 | WT198X LED60S/840 L1 S L1500 | Yes | - | EB | Temperature 650 °C, duration 30 s |
| 911401571491 | WT198X LED82S/840 L1 S L1500 | Yes | - | EB | Temperature 650 °C, duration 30 s |
| 911401571591 | WT198X LED20S/865 L1 S L600 | Yes | - | EB | Temperature 650 °C, duration 30 s |
| 911401571891 | WT198X LED60S/865 L1 S L1500 | Yes | - | EB | Temperature 650 °C, duration 30 s |
| 911401571991 | WT198X LED82S/865 L1 S L1500 | Yes | - | EB | Temperature 650 °C, duration 30 s |
| 911401552502 | WT198X LED19S/840 L1 W PCO L600 | Yes | - | EB | Temperature 650 °C, duration 30 s |
| 911401552602 | WT198X LED26S/840 L1 W PCO L1200 | Yes | - | EB | Temperature 650 °C, duration 30 s |
| 911401552702 | WT198X LED38S/840 L1 W PCO L1200 | Yes | - | EB | Temperature 650 °C, duration 30 s |
| 911401552802 | WT198X LED57S/840 L1 W PCO L1500 | Yes | - | EB | Temperature 650 °C, duration 30 s |
| 911401552902 | WT198X LED77S/840 L1 W PCO L1500 | Yes | - | EB | Temperature 650 °C, duration 30 s |
| 911401553002 | WT198X LED19S/865 L1 W PCO L600 | Yes | - | EB | Temperature 650 °C, duration 30 s |
| 911401553102 | WT198X LED26S/865 L1 W PCO L1200 | Yes | - | EB | Temperature 650 °C, duration 30 s |

| Order Code | Full Product Name | Driver included | Flammability mark | Gear | Glow-wire test |
|--------------|-------------------------------------|-----------------|---|------|--------------------------------------|
| 911401553202 | WT198X LED38S/865 L1 W PCO L1200 | Yes | - | EB | Temperature 650 °C, duration 30 s |
| 911401553302 | WT198X LED57S/865 L1 W PCO L1500 | Yes | - | EB | Temperature 650 °C, duration 30 s |
| 911401553402 | WT198X LED77S/865 L1 W PCO L1500 | Yes | - | EB | Temperature 650 °C, duration 30 s |
| 911401572091 | WT198X LED19S/840 L1 S PCO L600 | Yes | - | EB | Temperature 650 °C, duration 30 s |
| 911401572391 | WT198X LED57S/840 L1 S PCO L1500 | Yes | - | EB | Temperature 650 °C, duration 30 s |
| 911401572491 | WT198X LED77S/840 L1 S PCO L1500 | Yes | - | EB | Temperature 650 °C, duration 30 s |
| 911401572591 | WT198X LED19S/865 L1 S PCO L600 | Yes | - | EB | Temperature 650 °C, duration 30 s |
| 911401572891 | WT198X LED57S/865 L1 S PCO L1500 | Yes | - | EB | Temperature 650 °C, duration 30 s |
| 911401572991 | WT198X LED77S/865 L1 S PCO L1500 | Yes | - | EB | Temperature 650 °C, duration 30 s |
| 911401549981 | WT198X LED20S/840 WIA L600 | - | For mounting on normally flammable surfaces | - | - |
| 911401571191 | WT198X LED27S/840 L1 S L1200 | Yes | - | EB | Temperature 650 °C, duration 30 s |
| 911401571291 | WT198X LED40S/840 L1 S L1200 | Yes | - | EB | Temperature 650 °C, duration 30 s |
| 911401571691 | WT198X LED27S/865 L1 S L1200 | Yes | - | EB | Temperature 650 °C, duration 30 s |
| 911401571791 | WT198X LED40S/865 L1 S L1200 | Yes | - | EB | Temperature 650 °C, duration 30 s |
| 911401572191 | WT198X LED26S/840 L1 S PCO L1200 | Yes | - | EB | Temperature 650 °C, duration 30 s |
| 911401572291 | WT198X LED38S/840 L1 S PCO L1200 | Yes | - | EB | Temperature 650 °C, duration 30 s |
| 911401572691 | WT198X LED26S/865 L1 S PCO L1200 | Yes | - | EB | Temperature 650 °C, duration 30 s |
| 911401572791 | WT198X LED38S/865 L1 S PCO L1200 | Yes | - | EB | Temperature 650 °C, duration 30 s |
| 911401550281 | WT198X LED60S/840 WIA L1500 | - | For mounting on normally flammable surfaces | - | - |
| 911401552261 | WT198C LED40S/840 PSU L1200 CL | Yes | - | - | Temperature 850 °C, duration 30 s |
| 911401552361 | WT198C LED60S/840 PSU L1500 CL | Yes | - | - | Temperature 850 °C, duration 30 s |
| 911401552461 | WT198C LED19S/840 PSU L600 CL | Yes | - | - | Temperature 850 °C, duration 30 s |
| 911401562761 | WT198C LED27S/840 PSD L1200 | Yes | - | - | Temperature 850 °C, duration 30 s |

GreenPerform Waterproof G3

| Order Code | Full Product Name | Driver included | Flammability mark | Gear | Glow-wire test |
|--------------|---------------------------------|-----------------|---|------|-----------------------------------|
| 911401562861 | WT198C LED40S/840 PSD L1200 | Yes | - | - | Temperature 850 °C, duration 30 s |
| 911401562961 | WT198C LED60S/840 PSD L1500 | Yes | - | - | Temperature 850 °C, duration 30 s |
| 911401563061 | WT198C LED80S/840 PSD L1500 | Yes | - | - | Temperature 850 °C, duration 30 s |
| 911401825580 | WT198C LED19S/840 PSU L600 | Yes | - | - | Temperature 850 °C, duration 30 s |
| 911401825680 | WT198C LED27S/840 PSU L1200 | Yes | - | - | Temperature 850 °C, duration 30 s |
| 911401825780 | WT198C LED40S/840 PSU L1200 | Yes | - | - | Temperature 850 °C, duration 30 s |
| 911401825880 | WT198C LED60S/840 PSU L1500 | Yes | - | - | Temperature 850 °C, duration 30 s |
| 911401825980 | WT198C LED80S/840 PSU L1500 | Yes | - | - | Temperature 850 °C, duration 30 s |
| 911401826080 | WT198C LED18S/840 PSU PCO L600 | Yes | - | - | Temperature 850 °C, duration 30 s |
| 911401826180 | WT198C LED25S/840 PSU PCO L1200 | Yes | - | - | Temperature 850 °C, duration 30 s |
| 911401826380 | WT198C LED37S/840 PSU PCO L1200 | Yes | - | - | Temperature 850 °C, duration 30 s |
| 911401826480 | WT198C LED57S/840 PSU PCO L1500 | Yes | - | - | Temperature 850 °C, duration 30 s |
| 911401826580 | WT198C LED75S/840 PSU PCO L1500 | Yes | - | - | Temperature 850 °C, duration 30 s |
| 911401550181 | WT198X LED40S/840 WIA L1200 | - | For mounting on normally flammable surfaces | - | - |

General Information (2/2)

| Order Code | Full Product Name | Light source replaceable | Number of gear units | Order Code | Full Product Name | Light source replaceable | Number of gear units |
|--------------|--------------------------------|--------------------------|----------------------|--------------|----------------------------------|--------------------------|----------------------|
| 911401514342 | WT198C LED10S/840 PSU L600 | - | - | 911401571591 | WT198X LED20S/865 L1 S L600 | - | 1 unit |
| 911401514442 | WT198C LED10S/840 PSU PCO L600 | - | - | 911401571891 | WT198X LED60S/865 L1 S L1500 | - | 1 unit |
| 911401551502 | WT198X LED20S/840 L1 W L600 | - | 1 unit | 911401571991 | WT198X LED82S/865 L1 S L1500 | - | 1 unit |
| 911401551602 | WT198X LED27S/840 L1 W L1200 | - | 1 unit | 911401552502 | WT198X LED19S/840 L1 W PCO L600 | - | 1 unit |
| 911401551702 | WT198X LED40S/840 L1 W L1200 | - | 1 unit | 911401552602 | WT198X LED26S/840 L1 W PCO L1200 | - | 1 unit |
| 911401551802 | WT198X LED60S/840 L1 W L1500 | - | 1 unit | 911401552702 | WT198X LED38S/840 L1 W PCO L1200 | - | 1 unit |
| 911401551902 | WT198X LED82S/840 L1 W L1500 | - | 1 unit | 911401552802 | WT198X LED57S/840 L1 W PCO L1500 | - | 1 unit |
| 911401552002 | WT198X LED20S/865 L1 W L600 | - | 1 unit | 911401552902 | WT198X LED77S/840 L1 W PCO L1500 | - | 1 unit |
| 911401552102 | WT198X LED27S/865 L1 W L1200 | - | 1 unit | 911401553002 | WT198X LED19S/865 L1 W PCO L600 | - | 1 unit |
| 911401552202 | WT198X LED40S/865 L1 W L1200 | - | 1 unit | | | | |
| 911401552302 | WT198X LED60S/865 L1 W L1500 | - | 1 unit | | | | |
| 911401552402 | WT198X LED82S/865 L1 W L1500 | - | 1 unit | | | | |
| 911401571091 | WT198X LED20S/840 L1 S L600 | - | 1 unit | | | | |
| 911401571391 | WT198X LED60S/840 L1 S L1500 | - | 1 unit | | | | |
| 911401571491 | WT198X LED82S/840 L1 S L1500 | - | 1 unit | | | | |

GreenPerform Waterproof G3

| Order Code | Full Product Name | Light source replaceable | Number of gear units |
|--------------|----------------------------------|--------------------------|----------------------|
| 911401553102 | WT198X LED26S/865 L1 W PCO L1200 | - | 1 unit |
| 911401553202 | WT198X LED38S/865 L1 W PCO L1200 | - | 1 unit |
| 911401553302 | WT198X LED57S/865 L1 W PCO L1500 | - | 1 unit |
| 911401553402 | WT198X LED77S/865 L1 W PCO L1500 | - | 1 unit |
| 911401572091 | WT198X LED19S/840 L1 S PCO L600 | - | 1 unit |
| 911401572391 | WT198X LED57S/840 L1 S PCO L1500 | - | 1 unit |
| 911401572491 | WT198X LED77S/840 L1 S PCO L1500 | - | 1 unit |
| 911401572591 | WT198X LED19S/865 L1 S PCO L600 | - | 1 unit |
| 911401572891 | WT198X LED57S/865 L1 S PCO L1500 | - | 1 unit |
| 911401572991 | WT198X LED77S/865 L1 S PCO L1500 | - | 1 unit |
| 911401549981 | WT198X LED20S/840 WIA L600 | - | - |
| 911401571191 | WT198X LED27S/840 L1 S L1200 | - | 1 unit |
| 911401571291 | WT198X LED40S/840 L1 S L1200 | - | 1 unit |
| 911401571691 | WT198X LED27S/865 L1 S L1200 | - | 1 unit |
| 911401571791 | WT198X LED40S/865 L1 S L1200 | - | 1 unit |
| 911401572191 | WT198X LED26S/840 L1 S PCO L1200 | - | 1 unit |
| 911401572291 | WT198X LED38S/840 L1 S PCO L1200 | - | 1 unit |
| 911401572691 | WT198X LED26S/865 L1 S PCO L1200 | - | 1 unit |

| Order Code | Full Product Name | Light source replaceable | Number of gear units |
|--------------|----------------------------------|--------------------------|----------------------|
| 911401572791 | WT198X LED38S/865 L1 S PCO L1200 | - | 1 unit |
| 911401550281 | WT198X LED60S/840 WIA L1500 | - | - |
| 911401552261 | WT198C LED40S/840 PSU L1200 CL | No | 1 unit |
| 911401552361 | WT198C LED60S/840 PSU L1500 CL | No | 1 unit |
| 911401552461 | WT198C LED19S/840 PSU L600 CL | No | 1 unit |
| 911401562761 | WT198C LED27S/840 PSD L1200 | No | 1 unit |
| 911401562861 | WT198C LED40S/840 PSD L1200 | No | 1 unit |
| 911401562961 | WT198C LED60S/840 PSD L1500 | No | 1 unit |
| 911401563061 | WT198C LED80S/840 PSD L1500 | No | 1 unit |
| 911401825580 | WT198C LED19S/840 PSU L600 | No | 1 unit |
| 911401825680 | WT198C LED27S/840 PSU L1200 | No | 1 unit |
| 911401825780 | WT198C LED40S/840 PSU L1200 | No | 1 unit |
| 911401825880 | WT198C LED60S/840 PSU L1500 | No | 1 unit |
| 911401825980 | WT198C LED80S/840 PSU L1500 | No | 1 unit |
| 911401826080 | WT198C LED18S/840 PSU PCO L600 | No | 1 unit |
| 911401826180 | WT198C LED25S/840 PSU PCO L1200 | No | 1 unit |
| 911401826380 | WT198C LED37S/840 PSU PCO L1200 | No | 1 unit |
| 911401826480 | WT198C LED57S/840 PSU PCO L1500 | No | 1 unit |
| 911401826580 | WT198C LED75S/840 PSU PCO L1500 | No | 1 unit |
| 911401550181 | WT198X LED40S/840 WIA L1200 | - | - |

Light Technical (1/2)

| Order Code | Full Product Name | Beam angle of light source | Correlated Color | | Color rendering index (CRI) |
|--------------|--------------------------------|----------------------------|-------------------|----------------------------------|-----------------------------|
| | | | Temperature (Nom) | Optical cover type | |
| 911401514342 | WT198C LED10S/840 PSU L600 | - | 4000 K | Polycarbonate bowl/cover frosted | >80 |
| 911401514442 | WT198C LED10S/840 PSU PCO L600 | - | 4000 K | Polycarbonate bowl/cover opal | >80 |
| 911401551502 | WT198X LED20S/840 L1 W L600 | - | 4000 K | Polycarbonate bowl/cover | 80 |
| 911401551602 | WT198X LED27S/840 L1 W L1200 | - | 4000 K | Polycarbonate bowl/cover | 80 |

| Order Code | Full Product Name | Beam angle of light source | Correlated Color | | Color rendering index (CRI) |
|--------------|------------------------------|----------------------------|-------------------|--------------------------|-----------------------------|
| | | | Temperature (Nom) | Optical cover type | |
| 911401551702 | WT198X LED40S/840 L1 W L1200 | - | 4000 K | Polycarbonate bowl/cover | 80 |
| 911401551802 | WT198X LED60S/840 L1 W L1500 | - | 4000 K | Polycarbonate bowl/cover | 80 |
| 911401551902 | WT198X LED82S/840 L1 W L1500 | - | 4000 K | Polycarbonate bowl/cover | 80 |
| 911401552002 | WT198X LED20S/865 L1 W L600 | - | 6500 K | Polycarbonate bowl/cover | 80 |

GreenPerform Waterproof G3

| Order Code | Full Product Name | Beam angle of light source | Correlated Color Temperature (Nom) | Optical cover type | Color rendering index (CRI) |
|--------------|---|----------------------------|------------------------------------|-----------------------------|-----------------------------|
| 911401552102 | WT198X LED27S/865 L1 W L1200 | - | 6500 K | Polycarbonate bowl/cover | 80 |
| 911401552202 | WT198X LED40S/865 L1 W L1200 | - | 6500 K | Polycarbonate bowl/cover | 80 |
| 911401552302 | WT198X LED60S/865 L1 W L1500 | - | 6500 K | Polycarbonate bowl/cover | 80 |
| 911401552402 | WT198X LED82S/865 L1 W L1500 | - | 6500 K | Polycarbonate bowl/cover | 80 |
| 911401571091 | WT198X LED20S/840 L1 S L600 | - | 4000 K | Polycarbonate bowl/cover | 80 |
| 911401571391 | WT198X LED60S/840 L1 S L1500 | - | 4000 K | Polycarbonate bowl/cover | 80 |
| 911401571491 | WT198X LED82S/840 L1 S L1500 | - | 4000 K | Polycarbonate bowl/cover | 80 |
| 911401571591 | WT198X LED20S/865 L1 S L600 | - | 6500 K | Polycarbonate bowl/cover | 80 |
| 911401571891 | WT198X LED60S/865 L1 S L1500 | - | 6500 K | Polycarbonate bowl/cover | 80 |
| 911401571991 | WT198X LED82S/865 L1 S L1500 | - | 6500 K | Polycarbonate bowl/cover | 80 |
| 911401552502 | WT198X LED19S/840 L1 W PCO L600 | - | 4000 K | Polycarbonate bowl/cover | 80 |
| 911401552602 | WT198X LED26S/840 L1 W PCO L1200 | - | 4000 K | Polycarbonate bowl/cover | 80 |
| 911401552702 | WT198X LED38S/840 L1 W PCO L1200 | - | 4000 K | Polycarbonate bowl/cover | 80 |
| 911401552802 | WT198X LED57S/840 L1 W PCO L1500 | - | 4000 K | Polycarbonate bowl/cover | 80 |
| 911401552902 | WT198X LED77S/840 | - | 4000 K | Polycarbonate bowl/cover | 80 |

| Order Code | Full Product Name | Beam angle of light source | Correlated Color Temperature (Nom) | Optical cover type | Color rendering index (CRI) |
|--------------|---|----------------------------|------------------------------------|--------------------------------|-----------------------------|
| | L1 W PCO L1500 | | | | |
| 911401553002 | WT198X LED19S/865 L1 W PCO L600 | - | 6500 K | Polycarbonate bowl/cover | 80 |
| 911401553102 | WT198X LED26S/865 L1 W PCO L1200 | - | 6500 K | Polycarbonate bowl/cover | 80 |
| 911401553202 | WT198X LED38S/865 L1 W PCO L1200 | - | 6500 K | Polycarbonate bowl/cover | 80 |
| 911401553302 | WT198X LED57S/865 L1 W PCO L1500 | - | 6500 K | Polycarbonate bowl/cover | 80 |
| 911401553402 | WT198X LED77S/865 L1 W PCO L1500 | - | 6500 K | Polycarbonate bowl/cover | 80 |
| 911401572091 | WT198X LED19S/840 L1 S PCO L600 | - | 4000 K | Polycarbonate bowl/cover | 80 |
| 911401572391 | WT198X LED57S/840 L1 S PCO L1500 | - | 4000 K | Polycarbonate bowl/cover | 80 |
| 911401572491 | WT198X LED77S/840 L1 S PCO L1500 | - | 4000 K | Polycarbonate bowl/cover | 80 |
| 911401572591 | WT198X LED19S/865 L1 S PCO L600 | - | 6500 K | Polycarbonate bowl/cover | 80 |
| 911401572891 | WT198X LED57S/865 L1 S PCO L1500 | - | 6500 K | Polycarbonate bowl/cover | 80 |
| 911401572991 | WT198X LED77S/865 L1 S PCO L1500 | - | 6500 K | Polycarbonate bowl/cover | 80 |
| 911401549981 | WT198X LED20S/840 WIA L600 | - | 4000 K | Acrylic bowl/ cover frosted | >80 |

GreenPerform Waterproof G3

| Order Code | Full Product Name | Beam angle of light source | Correlated Color Temperature (Nom) | Optical cover type | Color rendering index (CRI) |
|--------------|---|----------------------------|------------------------------------|--------------------------------|-----------------------------|
| 911401571191 | WT198X LED27S/840 L1 S L1200 | - | 4000 K | Polycarbonate bowl/cover | 80 |
| 911401571291 | WT198X LED40S/840 L1 S L1200 | - | 4000 K | Polycarbonate bowl/cover | 80 |
| 911401571691 | WT198X LED27S/865 L1 S L1200 | - | 6500 K | Polycarbonate bowl/cover | 80 |
| 911401571791 | WT198X LED40S/865 L1 S L1200 | - | 6500 K | Polycarbonate bowl/cover | 80 |
| 911401572191 | WT198X LED26S/840 L1 S PCO L1200 | - | 4000 K | Polycarbonate bowl/cover | 80 |
| 911401572291 | WT198X LED38S/840 L1 S PCO L1200 | - | 4000 K | Polycarbonate bowl/cover | 80 |
| 911401572691 | WT198X LED26S/865 L1 S PCO L1200 | - | 6500 K | Polycarbonate bowl/cover | 80 |
| 911401572791 | WT198X LED38S/865 L1 S PCO L1200 | - | 6500 K | Polycarbonate bowl/cover | 80 |
| 911401550281 | WT198X LED60S/840 WIA L1500 | - | 4000 K | Acrylic bowl/ cover frosted | >80 |
| 911401552261 | WT198C LED40S/840 PSU L1200 CL | 120 degree(s) | 4000 K | - | >80 |
| 911401552361 | WT198C LED60S/840 PSU L1500 CL | 120 degree(s) | 4000 K | - | >80 |
| 911401552461 | WT198C LED19S/840 PSU L600 CL | 120 degree(s) | 4000 K | - | >80 |
| 911401562761 | WT198C LED27S/840 PSD L1200 | 120 degree(s) | 4000 K | - | >80 |
| 911401562861 | WT198C LED40S/840 PSD L1200 | 120 degree(s) | 4000 K | - | >80 |

| Order Code | Full Product Name | Beam angle of light source | Correlated Color Temperature (Nom) | Optical cover type | Color rendering index (CRI) |
|--------------|--|----------------------------|------------------------------------|--------------------------------|-----------------------------|
| 911401562961 | WT198C LED60S/840 PSD L1500 | 120 degree(s) | 4000 K | - | >80 |
| 911401563061 | WT198C LED80S/840 PSD L1500 | 120 degree(s) | 4000 K | - | >80 |
| 911401825580 | WT198C LED19S/840 PSU L600 | 120 degree(s) | 4000 K | - | >80 |
| 911401825680 | WT198C LED27S/840 PSU L1200 | 120 degree(s) | 4000 K | - | >80 |
| 911401825780 | WT198C LED40S/840 PSU L1200 | 120 degree(s) | 4000 K | - | >80 |
| 911401825880 | WT198C LED60S/840 PSU L1500 | 120 degree(s) | 4000 K | - | >80 |
| 911401825980 | WT198C LED80S/840 PSU L1500 | 120 degree(s) | 4000 K | - | >80 |
| 911401826080 | WT198C LED18S/840 PSU PCO L600 | 120 degree(s) | 4000 K | - | >80 |
| 911401826180 | WT198C LED25S/840 PSU PCO L1200 | 120 degree(s) | 4000 K | - | >80 |
| 911401826380 | WT198C LED37S/840 PSU PCO L1200 | 120 degree(s) | 4000 K | - | >80 |
| 911401826480 | WT198C LED57S/840 PSU PCO L1500 | 120 degree(s) | 4000 K | - | >80 |
| 911401826580 | WT198C LED75S/840 PSU PCO L1500 | 120 degree(s) | 4000 K | - | >80 |
| 911401550181 | WT198X LED40S/840 WIA L1200 | - | 4000 K | Acrylic bowl/ cover frosted | >80 |

Light Technical (2/2)

GreenPerform Waterproof G3

| Order Code | Full Product Name | Luminous Efficacy (rated) (Nom) | Luminous Flux | Number of light sources |
|--------------|----------------------------------|---------------------------------|---------------|-------------------------|
| 911401514342 | WT198C LED10S/840 PSU L600 | 130 lm/W | 1,000 lm | - |
| 911401514442 | WT198C LED10S/840 PSU PCO L600 | 120 lm/W | 1,000 lm | - |
| 911401551502 | WT198X LED20S/840 L1 W L600 | 136.1 lm/W | 2,000 lm | 1 |
| 911401551602 | WT198X LED27S/840 L1 W L1200 | 143.6 lm/W | 2,700 lm | 1 |
| 911401551702 | WT198X LED40S/840 L1 W L1200 | 138.4 lm/W | 4,000 lm | 1 |
| 911401551802 | WT198X LED60S/840 L1 W L1500 | 137.6 lm/W | 6,000 lm | 1 |
| 911401551902 | WT198X LED82S/840 L1 W L1500 | 138.7 lm/W | 8,200 lm | 1 |
| 911401552002 | WT198X LED20S/865 L1 W L600 | 136.1 lm/W | 2,000 lm | 1 |
| 911401552102 | WT198X LED27S/865 L1 W L1200 | 143.6 lm/W | 2,700 lm | 1 |
| 911401552202 | WT198X LED40S/865 L1 W L1200 | 138.4 lm/W | 4,000 lm | 1 |
| 911401552302 | WT198X LED60S/865 L1 W L1500 | 137.6 lm/W | 6,000 lm | 1 |
| 911401552402 | WT198X LED82S/865 L1 W L1500 | 138.7 lm/W | 8,200 lm | 1 |
| 911401571091 | WT198X LED20S/840 L1 S L600 | 136.1 lm/W | 2,000 lm | 1 |
| 911401571391 | WT198X LED60S/840 L1 S L1500 | 137.6 lm/W | 6,000 lm | 1 |
| 911401571491 | WT198X LED82S/840 L1 S L1500 | 138.7 lm/W | 8,200 lm | 1 |
| 911401571591 | WT198X LED20S/865 L1 S L600 | 136.1 lm/W | 2,000 lm | 1 |
| 911401571891 | WT198X LED60S/865 L1 S L1500 | 137.6 lm/W | 6,000 lm | 1 |
| 911401571991 | WT198X LED82S/865 L1 S L1500 | 138.7 lm/W | 8,200 lm | 1 |
| 911401552502 | WT198X LED19S/840 L1 W PCO L600 | 129.3 lm/W | 1,900 lm | 1 |
| 911401552602 | WT198X LED26S/840 L1 W PCO L1200 | 138.3 lm/W | 2,600 lm | 1 |
| 911401552702 | WT198X LED38S/840 L1 W PCO L1200 | 131.5 lm/W | 3,800 lm | 1 |
| 911401552802 | WT198X LED57S/840 L1 W PCO L1500 | 130.7 lm/W | 5,700 lm | 1 |
| 911401552902 | WT198X LED77S/840 L1 W PCO L1500 | 130.3 lm/W | 7,700 lm | 1 |
| 911401553002 | WT198X LED19S/865 L1 W PCO L600 | 129.3 lm/W | 1,900 lm | 1 |
| 911401553102 | WT198X LED26S/865 L1 W PCO L1200 | 138.3 lm/W | 2,600 lm | 1 |

| Order Code | Full Product Name | Luminous Efficacy (rated) (Nom) | Luminous Flux | Number of light sources |
|--------------|----------------------------------|---------------------------------|---------------|-------------------------|
| 911401553202 | WT198X LED38S/865 L1 W PCO L1200 | 131.5 lm/W | 3,800 lm | 1 |
| 911401553302 | WT198X LED57S/865 L1 W PCO L1500 | 130.7 lm/W | 5,700 lm | 1 |
| 911401553402 | WT198X LED77S/865 L1 W PCO L1500 | 130.3 lm/W | 7,700 lm | 1 |
| 911401572091 | WT198X LED19S/840 L1 S PCO L600 | 129.3 lm/W | 1,900 lm | 1 |
| 911401572391 | WT198X LED57S/840 L1 S PCO L1500 | 130.7 lm/W | 5,700 lm | 1 |
| 911401572491 | WT198X LED77S/840 L1 S PCO L1500 | 130.3 lm/W | 7,700 lm | 1 |
| 911401572591 | WT198X LED19S/865 L1 S PCO L600 | 129.3 lm/W | 1,900 lm | 1 |
| 911401572891 | WT198X LED57S/865 L1 S PCO L1500 | 130.7 lm/W | 5,700 lm | 1 |
| 911401572991 | WT198X LED77S/865 L1 S PCO L1500 | 130.3 lm/W | 7,700 lm | 1 |
| 911401549981 | WT198X LED20S/840 WIA L600 | 125 lm/W | 2,000 lm | - |
| 911401571191 | WT198X LED27S/840 L1 S L1200 | 143.6 lm/W | 2,700 lm | 1 |
| 911401571291 | WT198X LED40S/840 L1 S L1200 | 138.4 lm/W | 4,000 lm | 1 |
| 911401571691 | WT198X LED27S/865 L1 S L1200 | 143.6 lm/W | 2,700 lm | 1 |
| 911401571791 | WT198X LED40S/865 L1 S L1200 | 138.4 lm/W | 4,000 lm | 1 |
| 911401572191 | WT198X LED26S/840 L1 S PCO L1200 | 138.3 lm/W | 2,600 lm | 1 |
| 911401572291 | WT198X LED38S/840 L1 S PCO L1200 | 131.5 lm/W | 3,800 lm | 1 |
| 911401572691 | WT198X LED26S/865 L1 S PCO L1200 | 138.3 lm/W | 2,600 lm | 1 |
| 911401572791 | WT198X LED38S/865 L1 S PCO L1200 | 131.5 lm/W | 3,800 lm | 1 |
| 911401550281 | WT198X LED60S/840 WIA L1500 | 133 lm/W | 6,000 lm | - |
| 911401552261 | WT198C LED40S/840 PSU L1200 CL | 140 lm/W | 4,000 lm | - |
| 911401552361 | WT198C LED60S/840 PSU L1500 CL | 140 lm/W | 6,000 lm | - |
| 911401552461 | WT198C LED19S/840 PSU L600 CL | 127 lm/W | 1,900 lm | - |
| 911401562761 | WT198C LED27S/840 PSD L1200 | 132 lm/W | 2,700 lm | - |
| 911401562861 | WT198C LED40S/840 PSD L1200 | 140 lm/W | 4,000 lm | - |
| 911401562961 | WT198C LED60S/840 PSD L1500 | 140 lm/W | 6,000 lm | - |

GreenPerform Waterproof G3

| Order Code | Full Product Name | Luminous | | Number of light sources |
|--------------|-----------------------------|------------------------|---------------|-------------------------|
| | | Efficacy (rated) (Nom) | Luminous Flux | |
| 911401563061 | WT198C LED80S/840 PSD L1500 | 140 lm/W | 8,000 lm | - |
| 911401825580 | WT198C LED19S/840 PSU L600 | 127 lm/W | 1,900 lm | - |
| 911401825680 | WT198C LED27S/840 PSU L1200 | 132 lm/W | 2,700 lm | - |
| 911401825780 | WT198C LED40S/840 PSU L1200 | 140 lm/W | 4,000 lm | - |
| 911401825880 | WT198C LED60S/840 PSU L1500 | 140 lm/W | 6,000 lm | - |
| 911401825980 | WT198C LED80S/840 PSU L1500 | 140 lm/W | 8,000 lm | - |

| Order Code | Full Product Name | Luminous | | Number of light sources |
|--------------|---------------------------------|------------------------|---------------|-------------------------|
| | | Efficacy (rated) (Nom) | Luminous Flux | |
| 911401826080 | WT198C LED18S/840 PSU PCO L600 | 121 lm/W | 1,800 lm | - |
| 911401826180 | WT198C LED25S/840 PSU PCO L1200 | 122 lm/W | 2,500 lm | - |
| 911401826380 | WT198C LED37S/840 PSU PCO L1200 | 128 lm/W | 3,700 lm | - |
| 911401826480 | WT198C LED57S/840 PSU PCO L1500 | 130 lm/W | 5,700 lm | - |
| 911401826580 | WT198C LED75S/840 PSU PCO L1500 | 133 lm/W | 7,500 lm | - |
| 911401550181 | WT198X LED40S/840 WIA L1200 | 133 lm/W | 4,000 lm | - |

Operating and Electrical

| Order Code | Full Product Name | Input Voltage | Line Frequency | Power |
|--------------|--------------------------------|---------------|----------------|-------------|
| | | | | Consumption |
| 911401514342 | WT198C LED10S/840 PSU L600 | 220 to 240 V | 50 to 60 Hz | 7.8 W |
| 911401514442 | WT198C LED10S/840 PSU PCO L600 | 220 to 240 V | 50 to 60 Hz | 7.8 W |
| 911401551502 | WT198X LED20S/840 L1 W L600 | 220 to 240 V | 50 to 60 Hz | 14.7 W |
| 911401551602 | WT198X LED27S/840 L1 W L1200 | 220 to 240 V | 50 to 60 Hz | 18.8 W |
| 911401551702 | WT198X LED40S/840 L1 W L1200 | 220 to 240 V | 50 to 60 Hz | 28.9 W |
| 911401551802 | WT198X LED60S/840 L1 W L1500 | 220 to 240 V | 50 to 60 Hz | 43.6 W |
| 911401551902 | WT198X LED82S/840 L1 W L1500 | 220 to 240 V | 50 to 60 Hz | 59.1 W |
| 911401552002 | WT198X LED20S/865 L1 W L600 | 220 to 240 V | 50 to 60 Hz | 14.7 W |
| 911401552102 | WT198X LED27S/865 L1 W L1200 | 220 to 240 V | 50 to 60 Hz | 18.8 W |
| 911401552202 | WT198X LED40S/865 L1 W L1200 | 220 to 240 V | 50 to 60 Hz | 28.9 W |
| 911401552302 | WT198X LED60S/865 L1 W L1500 | 220 to 240 V | 50 to 60 Hz | 43.6 W |

| Order Code | Full Product Name | Input Voltage | Line Frequency | Power |
|--------------|----------------------------------|---------------|----------------|-------------|
| | | | | Consumption |
| 911401552402 | WT198X LED82S/865 L1 W L1500 | 220 to 240 V | 50 to 60 Hz | 59.1 W |
| 911401571091 | WT198X LED20S/840 L1 S L600 | 220 to 240 V | 50 to 60 Hz | 14.7 W |
| 911401571391 | WT198X LED60S/840 L1 S L1500 | 220 to 240 V | 50 to 60 Hz | 43.6 W |
| 911401571491 | WT198X LED82S/840 L1 S L1500 | 220 to 240 V | 50 to 60 Hz | 59.1 W |
| 911401571591 | WT198X LED20S/865 L1 S L600 | 220 to 240 V | 50 to 60 Hz | 14.7 W |
| 911401571891 | WT198X LED60S/865 L1 S L1500 | 220 to 240 V | 50 to 60 Hz | 43.6 W |
| 911401571991 | WT198X LED82S/865 L1 S L1500 | 220 to 240 V | 50 to 60 Hz | 59.1 W |
| 911401552502 | WT198X LED19S/840 L1 W PCO L600 | 220 to 240 V | 50 to 60 Hz | 14.7 W |
| 911401552602 | WT198X LED26S/840 L1 W PCO L1200 | 220 to 240 V | 50 to 60 Hz | 18.8 W |
| 911401552702 | WT198X LED38S/840 L1 W PCO L1200 | 220 to 240 V | 50 to 60 Hz | 28.9 W |
| 911401552802 | WT198X LED57S/840 L1 W PCO L1500 | 220 to 240 V | 50 to 60 Hz | 43.6 W |

GreenPerform Waterproof G3

| Order Code | Full Product Name | Input Voltage | Line Frequency | Power | |
|--------------|--|---------------|----------------|-------------|--|
| | | | | Consumption | |
| 911401552902 | WT198X LED77S/840 L1 W PCO L1500 | 220 to 240 V | 50 to 60 Hz | 59.1 W | |
| 911401553002 | WT198X LED19S/865 L1 W PCO L600 | 220 to 240 V | 50 to 60 Hz | 14.7 W | |
| 911401553102 | WT198X LED26S/865 L1 W PCO L1200 | 220 to 240 V | 50 to 60 Hz | 18.8 W | |
| 911401553202 | WT198X LED38S/865 L1 W PCO L1200 | 220 to 240 V | 50 to 60 Hz | 28.9 W | |
| 911401553302 | WT198X LED57S/865 L1 W PCO L1500 | 220 to 240 V | 50 to 60 Hz | 43.6 W | |
| 911401553402 | WT198X LED77S/865 L1 W PCO L1500 | 220 to 240 V | 50 to 60 Hz | 59.1 W | |
| 911401572091 | WT198X LED19S/840 L1 S PCO L600 | 220 to 240 V | 50 to 60 Hz | 14.7 W | |
| 911401572391 | WT198X LED57S/840 L1 S PCO L1500 | 220 to 240 V | 50 to 60 Hz | 43.6 W | |
| 911401572491 | WT198X LED77S/840 L1 S PCO L1500 | 220 to 240 V | 50 to 60 Hz | 59.1 W | |
| 911401572591 | WT198X LED19S/865 L1 S PCO L600 | 220 to 240 V | 50 to 60 Hz | 14.7 W | |
| 911401572891 | WT198X LED57S/865 L1 S PCO L1500 | 220 to 240 V | 50 to 60 Hz | 43.6 W | |
| 911401572991 | WT198X LED77S/865 L1 S PCO L1500 | 220 to 240 V | 50 to 60 Hz | 59.1 W | |
| 911401549981 | WT198X LED20S/840 WIA L600 | 220-240 V | 50 or 60 Hz | 16 W | |
| 911401571191 | WT198X LED27S/840 L1 S L1200 | 220 to 240 V | 50 to 60 Hz | 18.8 W | |
| 911401571291 | WT198X LED40S/840 L1 S L1200 | 220 to 240 V | 50 to 60 Hz | 28.9 W | |
| 911401571691 | WT198X LED27S/865 L1 S L1200 | 220 to 240 V | 50 to 60 Hz | 18.8 W | |
| 911401571791 | WT198X LED40S/865 L1 S L1200 | 220 to 240 V | 50 to 60 Hz | 28.9 W | |
| 911401572191 | WT198X LED26S/840 L1 S PCO L1200 | 220 to 240 V | 50 to 60 Hz | 18.8 W | |

| Order Code | Full Product Name | Input Voltage | Line Frequency | Power | |
|--------------|--|---------------|----------------|-------------|--|
| | | | | Consumption | |
| 911401572291 | WT198X LED38S/840 L1 S PCO L1200 | 220 to 240 V | 50 to 60 Hz | 28.9 W | |
| 911401572691 | WT198X LED26S/865 L1 S PCO L1200 | 220 to 240 V | 50 to 60 Hz | 18.8 W | |
| 911401572791 | WT198X LED38S/865 L1 S PCO L1200 | 220 to 240 V | 50 to 60 Hz | 28.9 W | |
| 911401550281 | WT198X LED60S/840 WIA L1500 | 220-240 V | 50 or 60 Hz | 45 W | |
| 911401552261 | WT198C LED40S/840 PSU L1200 CL | 220 to 240 V | 50 or 60 Hz | 28.6 W | |
| 911401552361 | WT198C LED60S/840 PSU L1500 CL | 220 to 240 V | 50 or 60 Hz | 42.7 W | |
| 911401552461 | WT198C LED19S/840 PSU L600 CL | 220 to 240 V | 50 or 60 Hz | 15 W | |
| 911401562761 | WT198C LED27S/840 PSD L1200 | 220 to 240 V | 50 or 60 Hz | 20.5 W | |
| 911401562861 | WT198C LED40S/840 PSD L1200 | 220 to 240 V | 50 or 60 Hz | 28.6 W | |
| 911401562961 | WT198C LED60S/840 PSD L1500 | 220 to 240 V | 50 or 60 Hz | 42.7 W | |
| 911401563061 | WT198C LED80S/840 PSD L1500 | 220 to 240 V | 50 or 60 Hz | 57 W | |
| 911401825580 | WT198C LED19S/840 PSU L600 | 220 to 240 V | 50 or 60 Hz | 15 W | |
| 911401825680 | WT198C LED27S/840 PSU L1200 | 220 to 240 V | 50 or 60 Hz | 20.5 W | |
| 911401825780 | WT198C LED40S/840 PSU L1200 | 220 to 240 V | 50 or 60 Hz | 28.6 W | |
| 911401825880 | WT198C LED60S/840 PSU L1500 | 220 to 240 V | 50 or 60 Hz | 42.7 W | |
| 911401825980 | WT198C LED80S/840 PSU L1500 | 220 to 240 V | 50 or 60 Hz | 57 W | |
| 911401826080 | WT198C LED18S/840 PSU PCO L600 | 220 to 240 V | 50 or 60 Hz | 15 W | |

GreenPerform Waterproof G3

| Order Code | Full Product Name | Input Voltage | Line Frequency | Power |
|--------------|---------------------------------------|---------------|----------------|-------------|
| | | | | Consumption |
| 911401826180 | WT198C LED25S/840 PSU PCO L1200 | 220 to 240 V | 50 or 60 Hz | 20.5 W |
| 911401826380 | WT198C LED37S/840 PSU PCO L1200 | 220 to 240 V | 50 or 60 Hz | 28.6 W |
| 911401826480 | WT198C LED57S/840 PSU PCO L1500 | 220 to 240 V | 50 or 60 Hz | 42.7 W |

| Order Code | Full Product Name | Input Voltage | Line Frequency | Power |
|--------------|---------------------------------------|---------------|----------------|-------------|
| | | | | Consumption |
| 911401826580 | WT198C LED75S/840 PSU PCO L1500 | 220 to 240 V | 50 or 60 Hz | 57 W |
| 911401550181 | WT198X LED40S/840 WIA L1200 | 220-240 V | 50 or 60 Hz | 30 W |

Controls and Dimming

| Order Code | Full Product Name | Dimmable |
|--------------|----------------------------------|--------------|
| 911401514342 | WT198C LED10S/840 PSU L600 | No |
| 911401514442 | WT198C LED10S/840 PSU PCO L600 | No |
| 911401551502 | WT198X LED20S/840 L1 W L600 | Wireless Dim |
| 911401551602 | WT198X LED27S/840 L1 W L1200 | Step Dim |
| 911401551702 | WT198X LED40S/840 L1 W L1200 | Step Dim |
| 911401551802 | WT198X LED60S/840 L1 W L1500 | Wireless Dim |
| 911401551902 | WT198X LED82S/840 L1 W L1500 | Step Dim |
| 911401552002 | WT198X LED20S/865 L1 W L600 | Wireless Dim |
| 911401552102 | WT198X LED27S/865 L1 W L1200 | Step Dim |
| 911401552202 | WT198X LED40S/865 L1 W L1200 | Wireless Dim |
| 911401552302 | WT198X LED60S/865 L1 W L1500 | Wireless Dim |
| 911401552402 | WT198X LED82S/865 L1 W L1500 | Step Dim |
| 911401571091 | WT198X LED20S/840 L1 S L600 | Step Dim |
| 911401571391 | WT198X LED60S/840 L1 S L1500 | Step Dim |
| 911401571491 | WT198X LED82S/840 L1 S L1500 | Wireless Dim |
| 911401571591 | WT198X LED20S/865 L1 S L600 | Step Dim |
| 911401571891 | WT198X LED60S/865 L1 S L1500 | Step Dim |
| 911401571991 | WT198X LED82S/865 L1 S L1500 | Wireless Dim |
| 911401552502 | WT198X LED19S/840 L1 W PCO L600 | Wireless Dim |
| 911401552602 | WT198X LED26S/840 L1 W PCO L1200 | Wireless Dim |
| 911401552702 | WT198X LED38S/840 L1 W PCO L1200 | Step Dim |
| 911401552802 | WT198X LED57S/840 L1 W PCO L1500 | Wireless Dim |
| 911401552902 | WT198X LED77S/840 L1 W PCO L1500 | Step Dim |
| 911401553002 | WT198X LED19S/865 L1 W PCO L600 | Wireless Dim |
| 911401553102 | WT198X LED26S/865 L1 W PCO L1200 | Step Dim |
| 911401553202 | WT198X LED38S/865 L1 W PCO L1200 | Step Dim |
| 911401553302 | WT198X LED57S/865 L1 W PCO L1500 | Wireless Dim |
| 911401553402 | WT198X LED77S/865 L1 W PCO L1500 | Step Dim |
| 911401572091 | WT198X LED19S/840 L1 S PCO L600 | Step Dim |
| 911401572391 | WT198X LED57S/840 L1 S PCO L1500 | Step Dim |
| 911401572491 | WT198X LED77S/840 L1 S PCO L1500 | Step Dim |

| Order Code | Full Product Name | Dimmable |
|--------------|----------------------------------|--------------|
| 911401572591 | WT198X LED19S/865 L1 S PCO L600 | Step Dim |
| 911401572891 | WT198X LED57S/865 L1 S PCO L1500 | Step Dim |
| 911401572991 | WT198X LED77S/865 L1 S PCO L1500 | Wireless Dim |
| 911401549981 | WT198X LED20S/840 WIA L600 | Wireless Dim |
| 911401571191 | WT198X LED27S/840 L1 S L1200 | Wireless Dim |
| 911401571291 | WT198X LED40S/840 L1 S L1200 | Wireless Dim |
| 911401571691 | WT198X LED27S/865 L1 S L1200 | Wireless Dim |
| 911401571791 | WT198X LED40S/865 L1 S L1200 | Step Dim |
| 911401572191 | WT198X LED26S/840 L1 S PCO L1200 | Step Dim |
| 911401572291 | WT198X LED38S/840 L1 S PCO L1200 | Wireless Dim |
| 911401572691 | WT198X LED26S/865 L1 S PCO L1200 | Step Dim |
| 911401572791 | WT198X LED38S/865 L1 S PCO L1200 | Wireless Dim |
| 911401550281 | WT198X LED60S/840 WIA L1500 | Wireless Dim |
| 911401552261 | WT198C LED40S/840 PSU L1200 CL | No |
| 911401552361 | WT198C LED60S/840 PSU L1500 CL | No |
| 911401552461 | WT198C LED19S/840 PSU L600 CL | No |
| 911401562761 | WT198C LED27S/840 PSD L1200 | Yes |
| 911401562861 | WT198C LED40S/840 PSD L1200 | Yes |
| 911401562961 | WT198C LED60S/840 PSD L1500 | Yes |
| 911401563061 | WT198C LED80S/840 PSD L1500 | Yes |
| 911401825580 | WT198C LED19S/840 PSU L600 | No |
| 911401825680 | WT198C LED27S/840 PSU L1200 | No |
| 911401825780 | WT198C LED40S/840 PSU L1200 | No |
| 911401825880 | WT198C LED60S/840 PSU L1500 | No |
| 911401825980 | WT198C LED80S/840 PSU L1500 | No |
| 911401826080 | WT198C LED18S/840 PSU PCO L600 | No |
| 911401826180 | WT198C LED25S/840 PSU PCO L1200 | No |
| 911401826380 | WT198C LED37S/840 PSU PCO L1200 | No |
| 911401826480 | WT198C LED57S/840 PSU PCO L1500 | No |
| 911401826580 | WT198C LED75S/840 PSU PCO L1500 | No |
| 911401550181 | WT198X LED40S/840 WIA L1200 | Wireless Dim |

Initial Performance (IEC Compliant)

GreenPerform Waterproof G3

| Order Code | Full Product Name | Initial chromaticity | Luminous flux tolerance |
|--------------|----------------------------------|----------------------|-------------------------|
| 911401514342 | WT198C LED10S/840 PSU L600 | - | -10% / +10% |
| 911401514442 | WT198C LED10S/840 PSU PCO L600 | - | -10% / +10% |
| 911401551502 | WT198X LED20S/840 L1 W L600 | (0.38, 0.38) SDCM≤3 | -10% / +10% |
| 911401551602 | WT198X LED27S/840 L1 W L1200 | (0.38, 0.38) SDCM≤3 | -10% / +10% |
| 911401551702 | WT198X LED40S/840 L1 W L1200 | (0.38, 0.38) SDCM≤3 | -10% / +10% |
| 911401551802 | WT198X LED60S/840 L1 W L1500 | (0.38, 0.38) SDCM≤3 | -10% / +10% |
| 911401551902 | WT198X LED82S/840 L1 W L1500 | (0.38, 0.38) SDCM≤3 | -10% / +10% |
| 911401552002 | WT198X LED20S/865 L1 W L600 | (0.32, 0.33) SDCM≤3 | -10% / +10% |
| 911401552102 | WT198X LED27S/865 L1 W L1200 | (0.32, 0.33) SDCM≤3 | -10% / +10% |
| 911401552202 | WT198X LED40S/865 L1 W L1200 | (0.32, 0.33) SDCM≤3 | -10% / +10% |
| 911401552302 | WT198X LED60S/865 L1 W L1500 | (0.32, 0.33) SDCM≤3 | -10% / +10% |
| 911401552402 | WT198X LED82S/865 L1 W L1500 | (0.32, 0.33) SDCM≤3 | -10% / +10% |
| 911401571091 | WT198X LED20S/840 L1 S L600 | (0.38, 0.38) SDCM≤3 | -10% / +10% |
| 911401571391 | WT198X LED60S/840 L1 S L1500 | (0.38, 0.38) SDCM≤3 | -10% / +10% |
| 911401571491 | WT198X LED82S/840 L1 S L1500 | (0.38, 0.38) SDCM≤3 | -10% / +10% |
| 911401571591 | WT198X LED20S/865 L1 S L600 | (0.32, 0.33) SDCM≤3 | -10% / +10% |
| 911401571891 | WT198X LED60S/865 L1 S L1500 | (0.32, 0.33) SDCM≤3 | -10% / +10% |
| 911401571991 | WT198X LED82S/865 L1 S L1500 | (0.32, 0.33) SDCM≤3 | -10% / +10% |
| 911401552502 | WT198X LED19S/840 L1 W PCO L600 | (0.38, 0.38) SDCM≤3 | -10% / +10% |
| 911401552602 | WT198X LED26S/840 L1 W PCO L1200 | (0.38, 0.38) SDCM≤3 | -10% / +10% |
| 911401552702 | WT198X LED38S/840 L1 W PCO L1200 | (0.38, 0.38) SDCM≤3 | -10% / +10% |
| 911401552802 | WT198X LED57S/840 L1 W PCO L1500 | (0.38, 0.38) SDCM≤3 | -10% / +10% |
| 911401552902 | WT198X LED77S/840 L1 W PCO L1500 | (0.38, 0.38) SDCM≤3 | -10% / +10% |
| 911401553002 | WT198X LED19S/865 L1 W PCO L600 | (0.32, 0.33) SDCM≤3 | -10% / +10% |
| 911401553102 | WT198X LED26S/865 L1 W PCO L1200 | (0.32, 0.33) SDCM≤3 | -10% / +10% |

| Order Code | Full Product Name | Initial chromaticity | Luminous flux tolerance |
|--------------|----------------------------------|------------------------|-------------------------|
| 911401553202 | WT198X LED38S/865 L1 W PCO L1200 | (0.32, 0.33) SDCM≤3 | -10% / +10% |
| 911401553302 | WT198X LED57S/865 L1 W PCO L1500 | (0.32, 0.33) SDCM≤3 | -10% / +10% |
| 911401553402 | WT198X LED77S/865 L1 W PCO L1500 | (0.32, 0.33) SDCM≤3 | -10% / +10% |
| 911401572091 | WT198X LED19S/840 L1 S PCO L600 | (0.38, 0.38) SDCM≤3 | -10% / +10% |
| 911401572391 | WT198X LED57S/840 L1 S PCO L1500 | (0.38, 0.38) SDCM≤3 | -10% / +10% |
| 911401572491 | WT198X LED77S/840 L1 S PCO L1500 | (0.38, 0.38) SDCM≤3 | -10% / +10% |
| 911401572591 | WT198X LED19S/865 L1 S PCO L600 | (0.32, 0.33) SDCM≤3 | -10% / +10% |
| 911401572891 | WT198X LED57S/865 L1 S PCO L1500 | (0.32, 0.33) SDCM≤3 | -10% / +10% |
| 911401572991 | WT198X LED77S/865 L1 S PCO L1500 | (0.32, 0.33) SDCM≤3 | -10% / +10% |
| 911401549981 | WT198X LED20S/840 WIA L600 | (0.3742,0.3698) SDCM<3 | +/-10% |
| 911401571191 | WT198X LED27S/840 L1 S L1200 | (0.38, 0.38) SDCM≤3 | -10% / +10% |
| 911401571291 | WT198X LED40S/840 L1 S L1200 | (0.38, 0.38) SDCM≤3 | -10% / +10% |
| 911401571691 | WT198X LED27S/865 L1 S L1200 | (0.32, 0.33) SDCM≤3 | -10% / +10% |
| 911401571791 | WT198X LED40S/865 L1 S L1200 | (0.32, 0.33) SDCM≤3 | -10% / +10% |
| 911401572191 | WT198X LED26S/840 L1 S PCO L1200 | (0.38, 0.38) SDCM≤3 | -10% / +10% |
| 911401572291 | WT198X LED38S/840 L1 S PCO L1200 | (0.38, 0.38) SDCM≤3 | -10% / +10% |
| 911401572691 | WT198X LED26S/865 L1 S PCO L1200 | (0.32, 0.33) SDCM≤3 | -10% / +10% |
| 911401572791 | WT198X LED38S/865 L1 S PCO L1200 | (0.32, 0.33) SDCM≤3 | -10% / +10% |
| 911401550281 | WT198X LED60S/840 WIA L1500 | (0.3742,0.3698) SDCM<3 | +/-10% |
| 911401552261 | WT198C LED40S/840 PSU L1200 CL | (0.38,0.38) | +/-10% |
| 911401552361 | WT198C LED60S/840 PSU L1500 CL | (0.38,0.38) | +/-10% |
| 911401552461 | WT198C LED19S/840 PSU L600 CL | (0.38,0.38) | +/-10% |
| 911401562761 | WT198C LED27S/840 PSD L1200 | (0.38,0.38) | +/-10% |
| 911401562861 | WT198C LED40S/840 PSD L1200 | (0.38,0.38) | +/-10% |
| 911401562961 | WT198C LED60S/840 PSD L1500 | (0.38,0.38) | +/-10% |

GreenPerform Waterproof G3

| Order Code | Full Product Name | Initial chromaticity | Luminous flux tolerance |
|--------------|-----------------------------|----------------------|-------------------------|
| 911401563061 | WT198C LED80S/840 PSD L1500 | (0.38,0.38) | +/-10% |
| 911401825580 | WT198C LED19S/840 PSU L600 | (0.38,0.38) | +/-10% |
| 911401825680 | WT198C LED27S/840 PSU L1200 | (0.38,0.38) | +/-10% |
| 911401825780 | WT198C LED40S/840 PSU L1200 | (0.38,0.38) | +/-10% |
| 911401825880 | WT198C LED60S/840 PSU L1500 | (0.38,0.38) | +/-10% |
| 911401825980 | WT198C LED80S/840 PSU L1500 | (0.38,0.38) | +/-10% |

| Order Code | Full Product Name | Initial chromaticity | Luminous flux tolerance |
|--------------|---------------------------------|---------------------------|-------------------------|
| 911401826080 | WT198C LED18S/840 PSU PCO L600 | (0.38,0.38) | +/-10% |
| 911401826180 | WT198C LED25S/840 PSU PCO L1200 | (0.38,0.38) | +/-10% |
| 911401826380 | WT198C LED37S/840 PSU PCO L1200 | (0.38,0.38) | +/-10% |
| 911401826480 | WT198C LED57S/840 PSU PCO L1500 | (0.38,0.38) | +/-10% |
| 911401826580 | WT198C LED75S/840 PSU PCO L1500 | (0.38,0.38) | +/-10% |
| 911401550181 | WT198X LED40S/840 WIA L1200 | (0.3742,0.3698) SDCM<3 | +/-10% |

Over Time Performance (IEC Compliant)

| Order Code | Full Product Name | Driver failure rate at 5000 h | Median useful life L80B50 | Median useful life L90B50 |
|--------------|--------------------------------|-------------------------------|---------------------------|---------------------------|
| 911401514342 | WT198C LED10S/840 PSU L600 | - | - | - |
| 911401514442 | WT198C LED10S/840 PSU PCO L600 | - | - | - |
| 911401551502 | WT198X LED20S/840 L1 W L600 | - | - | - |
| 911401551602 | WT198X LED27S/840 L1 W L1200 | - | - | - |
| 911401551702 | WT198X LED40S/840 L1 W L1200 | - | - | - |
| 911401551802 | WT198X LED60S/840 L1 W L1500 | - | - | - |
| 911401551902 | WT198X LED82S/840 L1 W L1500 | - | - | - |
| 911401552002 | WT198X LED20S/865 L1 W L600 | - | - | - |
| 911401552102 | WT198X LED27S/865 L1 W L1200 | - | - | - |
| 911401552202 | WT198X LED40S/865 L1 W L1200 | - | - | - |
| 911401552302 | WT198X LED60S/865 L1 W L1500 | - | - | - |
| 911401552402 | WT198X LED82S/865 L1 W L1500 | - | - | - |
| 911401571091 | WT198X LED20S/840 L1 S L600 | - | - | - |
| 911401571391 | WT198X LED60S/840 L1 S L1500 | - | - | - |
| 911401571491 | WT198X LED82S/840 L1 S L1500 | - | - | - |
| 911401571591 | WT198X LED20S/865 L1 S L600 | - | - | - |

| Order Code | Full Product Name | Driver failure rate at 5000 h | Median useful life L80B50 | Median useful life L90B50 |
|--------------|----------------------------------|-------------------------------|---------------------------|---------------------------|
| 911401571891 | WT198X LED60S/865 L1 S L1500 | - | - | - |
| 911401571991 | WT198X LED82S/865 L1 S L1500 | - | - | - |
| 911401552502 | WT198X LED19S/840 L1 W PCO L600 | - | - | - |
| 911401552602 | WT198X LED26S/840 L1 W PCO L1200 | - | - | - |
| 911401552702 | WT198X LED38S/840 L1 W PCO L1200 | - | - | - |
| 911401552802 | WT198X LED57S/840 L1 W PCO L1500 | - | - | - |
| 911401552902 | WT198X LED77S/840 L1 W PCO L1500 | - | - | - |
| 911401553002 | WT198X LED19S/865 L1 W PCO L600 | - | - | - |
| 911401553102 | WT198X LED26S/865 L1 W PCO L1200 | - | - | - |
| 911401553202 | WT198X LED38S/865 L1 W PCO L1200 | - | - | - |
| 911401553302 | WT198X LED57S/865 L1 W PCO L1500 | - | - | - |
| 911401553402 | WT198X LED77S/865 L1 W PCO L1500 | - | - | - |
| 911401572091 | WT198X LED19S/840 L1 S PCO L600 | - | - | - |
| 911401572391 | WT198X LED57S/840 L1 S PCO L1500 | - | - | - |
| 911401572491 | WT198X LED77S/840 L1 S PCO L1500 | - | - | - |
| 911401572591 | WT198X LED19S/865 L1 S PCO L600 | - | - | - |

GreenPerform Waterproof G3

| Order Code | Full Product Name | Driver failure rate at 5000 h | Median useful life L80B50 | Median useful life L90B50 |
|--------------|----------------------------------|-------------------------------|---------------------------|---------------------------|
| 911401572891 | WT198X LED57S/865 L1 S PCO L1500 | - | - | - |
| 911401572991 | WT198X LED77S/865 L1 S PCO L1500 | - | - | - |
| 911401549981 | WT198X LED20S/840 WIA L600 | - | - | - |
| 911401571191 | WT198X LED27S/840 L1 S L1200 | - | - | - |
| 911401571291 | WT198X LED40S/840 L1 S L1200 | - | - | - |
| 911401571691 | WT198X LED27S/865 L1 S L1200 | - | - | - |
| 911401571791 | WT198X LED40S/865 L1 S L1200 | - | - | - |
| 911401572191 | WT198X LED26S/840 L1 S PCO L1200 | - | - | - |
| 911401572291 | WT198X LED38S/840 L1 S PCO L1200 | - | - | - |
| 911401572691 | WT198X LED26S/865 L1 S PCO L1200 | - | - | - |
| 911401572791 | WT198X LED38S/865 L1 S PCO L1200 | - | - | - |
| 911401550281 | WT198X LED60S/840 WIA L1500 | - | - | - |
| 911401552261 | WT198C LED40S/840 PSU L1200 CL | 0.01 % | 42,000 hour(s) | 20,000 hour(s) |
| 911401552361 | WT198C LED60S/840 PSU L1500 CL | 0.01 % | 42,000 hour(s) | 20,000 hour(s) |
| 911401552461 | WT198C LED19S/840 PSU L600 CL | 0.01 % | 42,000 hour(s) | 20,000 hour(s) |

| Order Code | Full Product Name | Driver failure rate at 5000 h | Median useful life L80B50 | Median useful life L90B50 |
|--------------|---------------------------------|-------------------------------|---------------------------|---------------------------|
| 911401562761 | WT198C LED27S/840 PSD L1200 | 0.01 % | 42,000 hour(s) | 20,000 hour(s) |
| 911401562861 | WT198C LED40S/840 PSD L1200 | 0.01 % | 42,000 hour(s) | 20,000 hour(s) |
| 911401562961 | WT198C LED60S/840 PSD L1500 | 0.01 % | 42,000 hour(s) | 20,000 hour(s) |
| 911401563061 | WT198C LED80S/840 PSD L1500 | 0.01 % | 42,000 hour(s) | 20,000 hour(s) |
| 911401825580 | WT198C LED19S/840 PSU L600 | 1 % | 42,000 hour(s) | 20,000 hour(s) |
| 911401825680 | WT198C LED27S/840 PSU L1200 | 1 % | 42,000 hour(s) | 20,000 hour(s) |
| 911401825780 | WT198C LED40S/840 PSU L1200 | 1 % | 42,000 hour(s) | 20,000 hour(s) |
| 911401825880 | WT198C LED60S/840 PSU L1500 | 1 % | 42,000 hour(s) | 20,000 hour(s) |
| 911401825980 | WT198C LED80S/840 PSU L1500 | 1 % | 42,000 hour(s) | 20,000 hour(s) |
| 911401826080 | WT198C LED18S/840 PSU PCO L600 | 1 % | 42,000 hour(s) | 20,000 hour(s) |
| 911401826180 | WT198C LED25S/840 PSU PCO L1200 | 1 % | 42,000 hour(s) | 20,000 hour(s) |
| 911401826380 | WT198C LED37S/840 PSU PCO L1200 | 1 % | 42,000 hour(s) | 20,000 hour(s) |
| 911401826480 | WT198C LED57S/840 PSU PCO L1500 | 1 % | 42,000 hour(s) | 20,000 hour(s) |
| 911401826580 | WT198C LED75S/840 PSU PCO L1500 | 1 % | 42,000 hour(s) | 20,000 hour(s) |
| 911401550181 | WT198X LED40S/840 WIA L1200 | - | - | - |

Application Conditions

| Order Code | Full Product Name | Maximum dim level | Suitable for random switching |
|--------------|--------------------------------|-------------------|-------------------------------|
| 911401514342 | WT198C LED10S/840 PSU L600 | - | - |
| 911401514442 | WT198C LED10S/840 PSU PCO L600 | - | - |
| 911401551502 | WT198X LED20S/840 L1 W L600 | 20% | Yes |
| 911401551602 | WT198X LED27S/840 L1 W L1200 | 20% | Yes |
| 911401551702 | WT198X LED40S/840 L1 W L1200 | 20% | Yes |
| 911401551802 | WT198X LED60S/840 L1 W L1500 | 20% | Yes |
| 911401551902 | WT198X LED82S/840 L1 W L1500 | 20% | Yes |
| 911401552002 | WT198X LED20S/865 L1 W L600 | 20% | Yes |
| 911401552102 | WT198X LED27S/865 L1 W L1200 | 20% | Yes |
| 911401552202 | WT198X LED40S/865 L1 W L1200 | 20% | Yes |
| 911401552302 | WT198X LED60S/865 L1 W L1500 | 20% | Yes |
| 911401552402 | WT198X LED82S/865 L1 W L1500 | 20% | Yes |
| 911401571091 | WT198X LED20S/840 L1 S L600 | 20% | Yes |
| 911401571391 | WT198X LED60S/840 L1 S L1500 | 20% | Yes |

| Order Code | Full Product Name | Maximum dim level | Suitable for random switching |
|--------------|----------------------------------|-------------------|-------------------------------|
| 911401571491 | WT198X LED82S/840 L1 S L1500 | 20% | Yes |
| 911401571591 | WT198X LED20S/865 L1 S L600 | 20% | Yes |
| 911401571891 | WT198X LED60S/865 L1 S L1500 | 20% | Yes |
| 911401571991 | WT198X LED82S/865 L1 S L1500 | 20% | Yes |
| 911401552502 | WT198X LED19S/840 L1 W PCO L600 | 20% | Yes |
| 911401552602 | WT198X LED26S/840 L1 W PCO L1200 | 20% | Yes |
| 911401552702 | WT198X LED38S/840 L1 W PCO L1200 | 20% | Yes |
| 911401552802 | WT198X LED57S/840 L1 W PCO L1500 | 20% | Yes |
| 911401552902 | WT198X LED77S/840 L1 W PCO L1500 | 20% | Yes |
| 911401553002 | WT198X LED19S/865 L1 W PCO L600 | 20% | Yes |

GreenPerform Waterproof G3

| Order Code | Full Product Name | Maximum dim level | Suitable for random switching |
|--------------|----------------------------------|-------------------|-------------------------------|
| 911401553102 | WT198X LED26S/865 L1 W PCO L1200 | 20% | Yes |
| 911401553202 | WT198X LED38S/865 L1 W PCO L1200 | 20% | Yes |
| 911401553302 | WT198X LED57S/865 L1 W PCO L1500 | 20% | Yes |
| 911401553402 | WT198X LED77S/865 L1 W PCO L1500 | 20% | Yes |
| 911401572091 | WT198X LED19S/840 L1 S PCO L600 | 20% | Yes |
| 911401572391 | WT198X LED57S/840 L1 S PCO L1500 | 20% | Yes |
| 911401572491 | WT198X LED77S/840 L1 S PCO L1500 | 20% | Yes |
| 911401572591 | WT198X LED19S/865 L1 S PCO L600 | 20% | Yes |
| 911401572891 | WT198X LED57S/865 L1 S PCO L1500 | 20% | Yes |
| 911401572991 | WT198X LED77S/865 L1 S PCO L1500 | 20% | Yes |
| 911401549981 | WT198X LED20S/840 WIA L600 | - | - |
| 911401571191 | WT198X LED27S/840 L1 S L1200 | 20% | Yes |
| 911401571291 | WT198X LED40S/840 L1 S L1200 | 20% | Yes |
| 911401571691 | WT198X LED27S/865 L1 S L1200 | 20% | Yes |
| 911401571791 | WT198X LED40S/865 L1 S L1200 | 20% | Yes |
| 911401572191 | WT198X LED26S/840 L1 S PCO L1200 | 20% | Yes |
| 911401572291 | WT198X LED38S/840 L1 S PCO L1200 | 20% | Yes |
| 911401572691 | WT198X LED26S/865 L1 S PCO L1200 | 20% | Yes |

| Order Code | Full Product Name | Maximum dim level | Suitable for random switching |
|--------------|----------------------------------|-------------------|-------------------------------|
| 911401572791 | WT198X LED38S/865 L1 S PCO L1200 | 20% | Yes |
| 911401550281 | WT198X LED60S/840 WIA L1500 | - | - |
| 911401552261 | WT198C LED40S/840 PSU L1200 CL | Not applicable | - |
| 911401552361 | WT198C LED60S/840 PSU L1500 CL | Not applicable | - |
| 911401552461 | WT198C LED19S/840 PSU L600 CL | Not applicable | - |
| 911401562761 | WT198C LED27S/840 PSD L1200 | Not applicable | Not applicable |
| 911401562861 | WT198C LED40S/840 PSD L1200 | Not applicable | Not applicable |
| 911401562961 | WT198C LED60S/840 PSD L1500 | Not applicable | Not applicable |
| 911401563061 | WT198C LED80S/840 PSD L1500 | Not applicable | Not applicable |
| 911401825580 | WT198C LED19S/840 PSU L600 | Not applicable | - |
| 911401825680 | WT198C LED27S/840 PSU L1200 | Not applicable | - |
| 911401825780 | WT198C LED40S/840 PSU L1200 | Not applicable | - |
| 911401825880 | WT198C LED60S/840 PSU L1500 | Not applicable | - |
| 911401825980 | WT198C LED80S/840 PSU L1500 | Not applicable | - |
| 911401826080 | WT198C LED18S/840 PSU PCO L600 | Not applicable | - |
| 911401826180 | WT198C LED25S/840 PSU PCO L1200 | Not applicable | - |
| 911401826380 | WT198C LED37S/840 PSU PCO L1200 | Not applicable | - |
| 911401826480 | WT198C LED57S/840 PSU PCO L1500 | Not applicable | - |
| 911401826580 | WT198C LED75S/840 PSU PCO L1500 | Not applicable | - |
| 911401550181 | WT198X LED40S/840 WIA L1200 | - | - |

